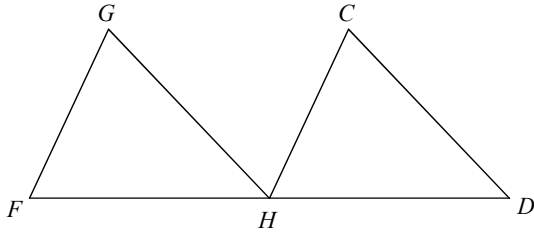


CDL Day 8

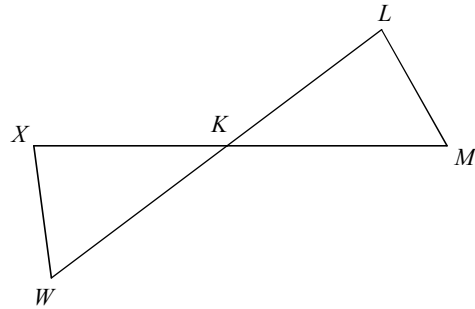
Complete each congruence statement by naming the corresponding angle or side.

1)  $\triangle FGH \cong \triangle HCD$



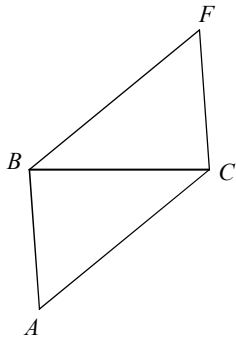
$\angle F \cong ?$

2)  $\triangle KLM \cong \triangle KXW$



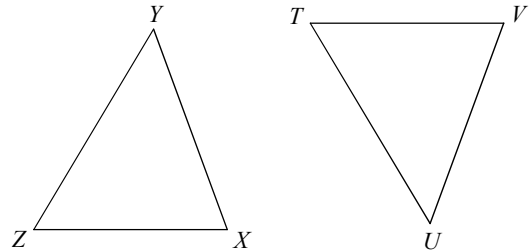
$\angle L \cong ?$

3)  $\triangle BCA \cong \triangle CBF$



$\overline{CA} \cong ?$

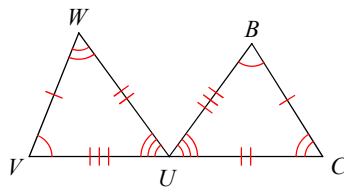
4)  $\triangle ZYX \cong \triangle TUV$



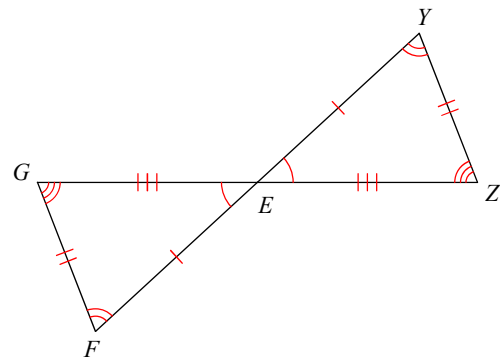
$\angle X \cong ?$

Write a statement that indicates that the triangles in each pair are congruent.

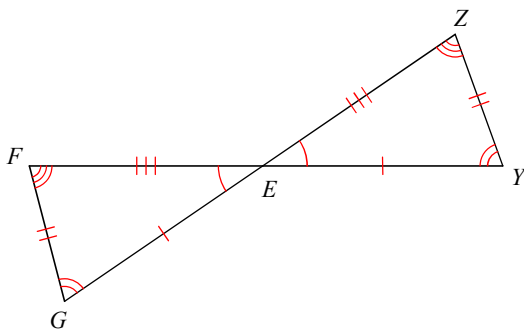
5)



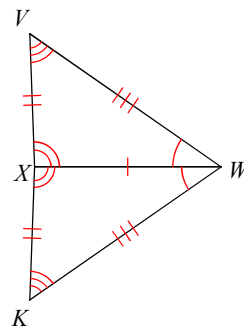
6)



7)



8)



State if the two triangles are congruent. If they are, state how you know.

